
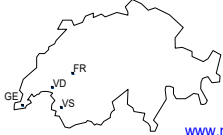
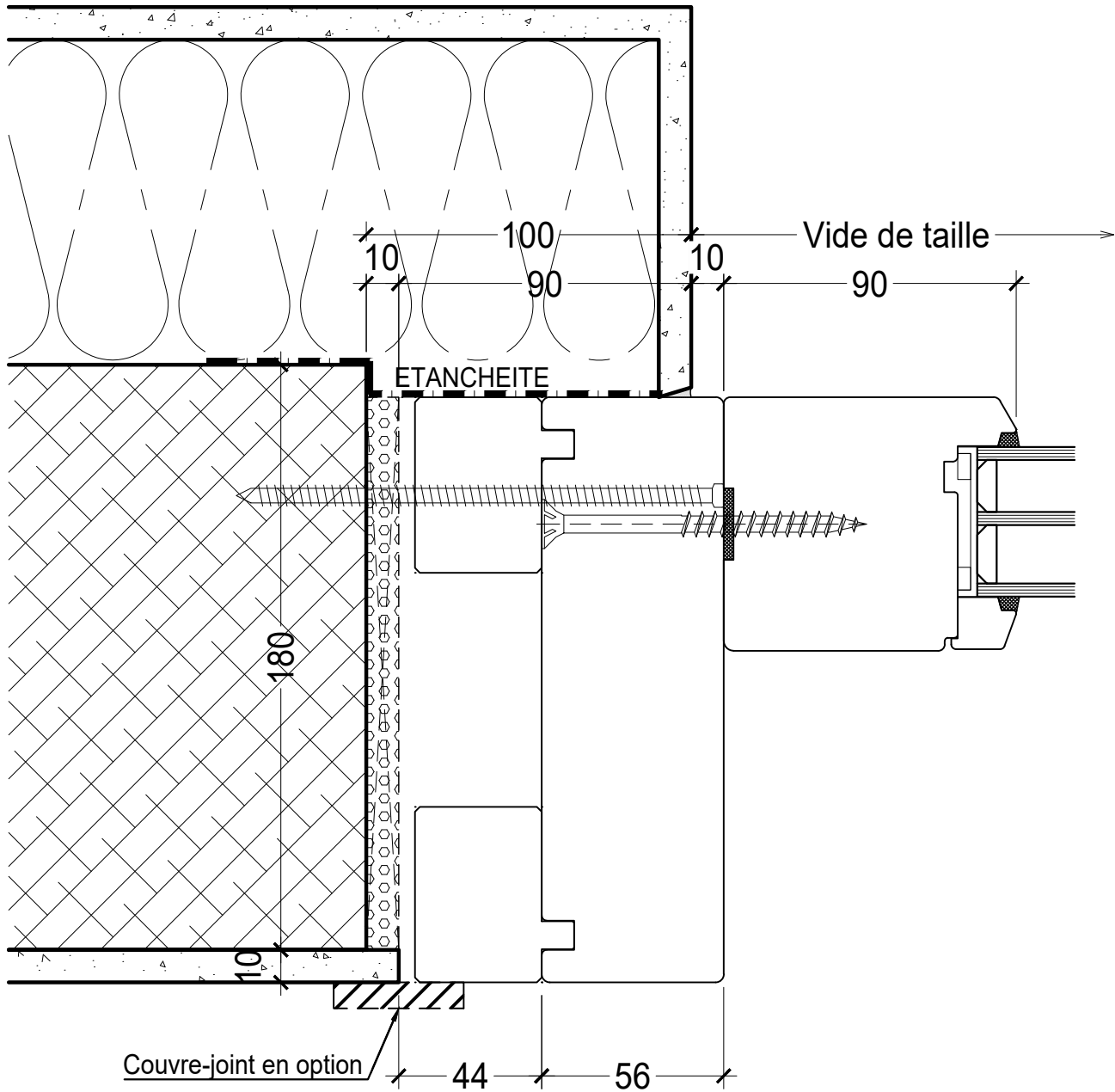

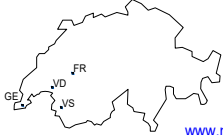


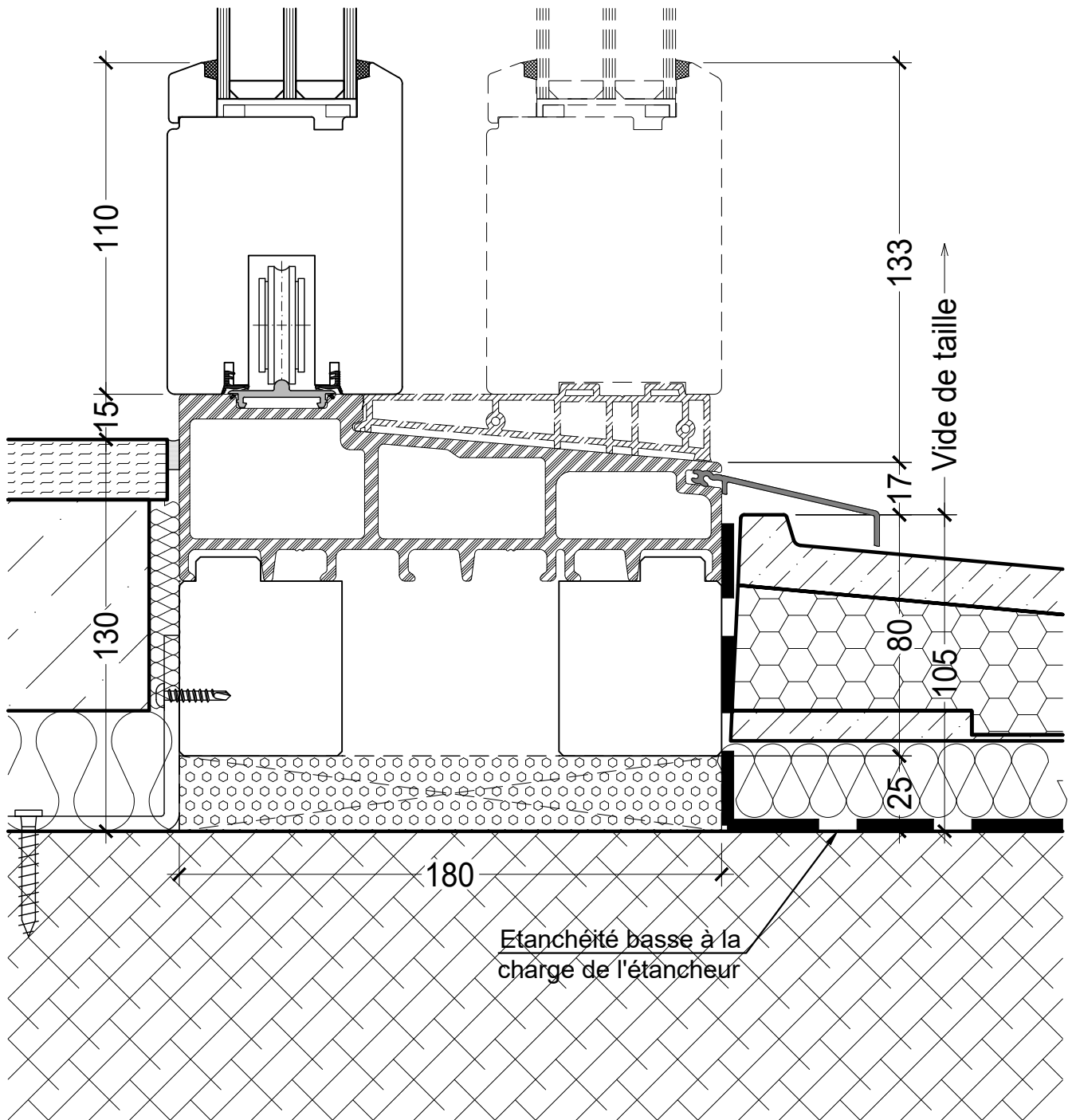
Concept du système d'étanchéité à charge DT

 NORBA MENUISERIE www.norba.ch		N°	01	Date	04.03.2022
		Tech.	DAO_20	Mod.	
Produit Menuiserie coulissante à levage Bois HAS6000	Ech. 1/2 A4	Ech.		Mod.	
		CAD 2017 Objet Détail latéral_Ouvrant Pose en affleuré intérieur	POS.: 22.03.01.01		


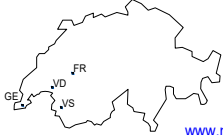


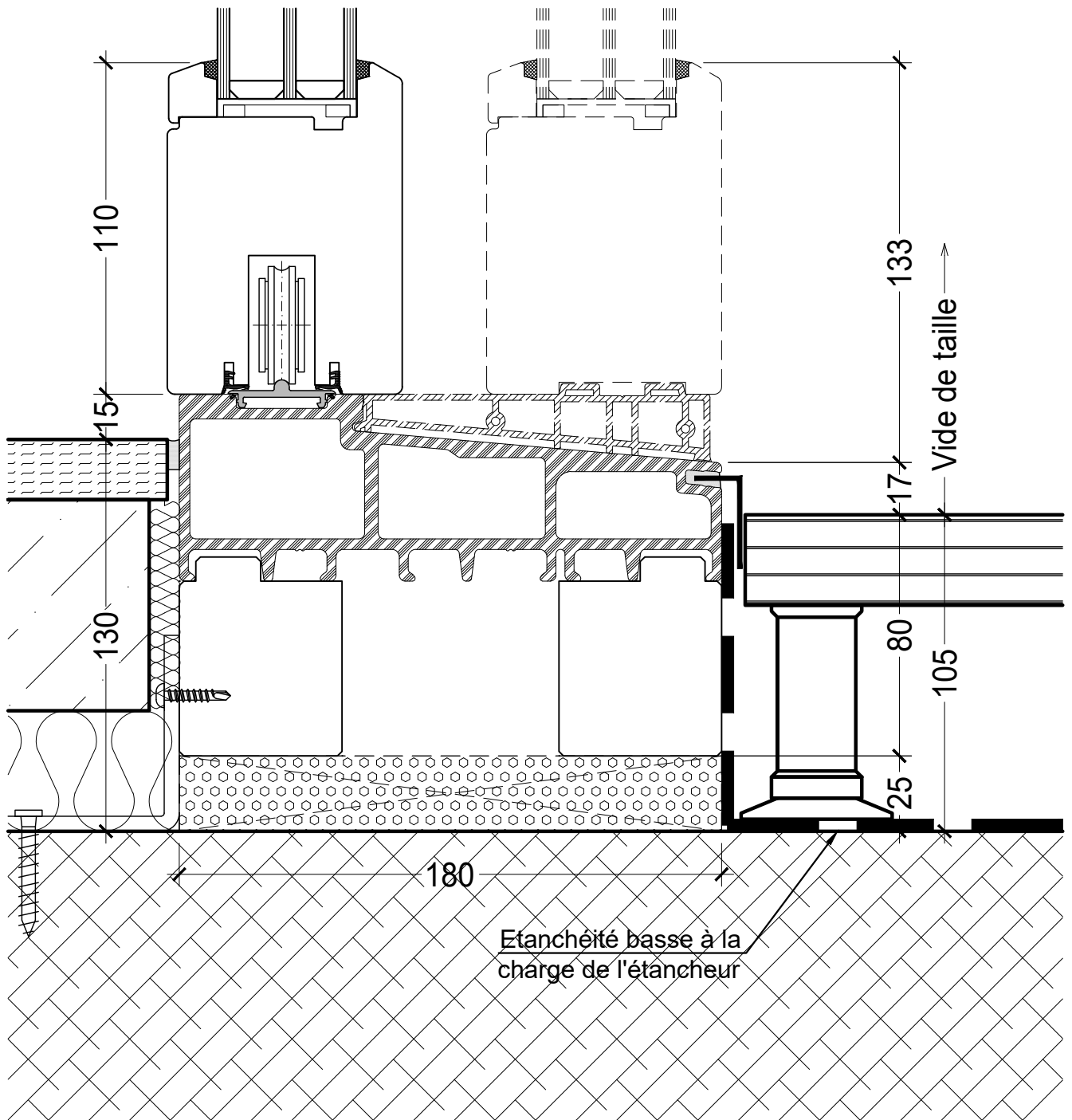
Concept du système d'étanchéité à charge DT

 NORBA MENUISERIE www.norba.ch		N°	02	Date	04.03.2022	
		Tech.	DAO_20	Mod.		
		Ech.	1/2 A4	Mod.		
Produit	Menuiserie coulissante à levage Bois HAS6000		Ech.		Mod.	
CAD 2017	Objet	Détail latéral_Fixe Pose en affleuré intérieur		POS.: 22.03.01.02		


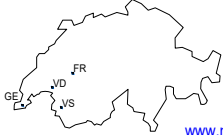


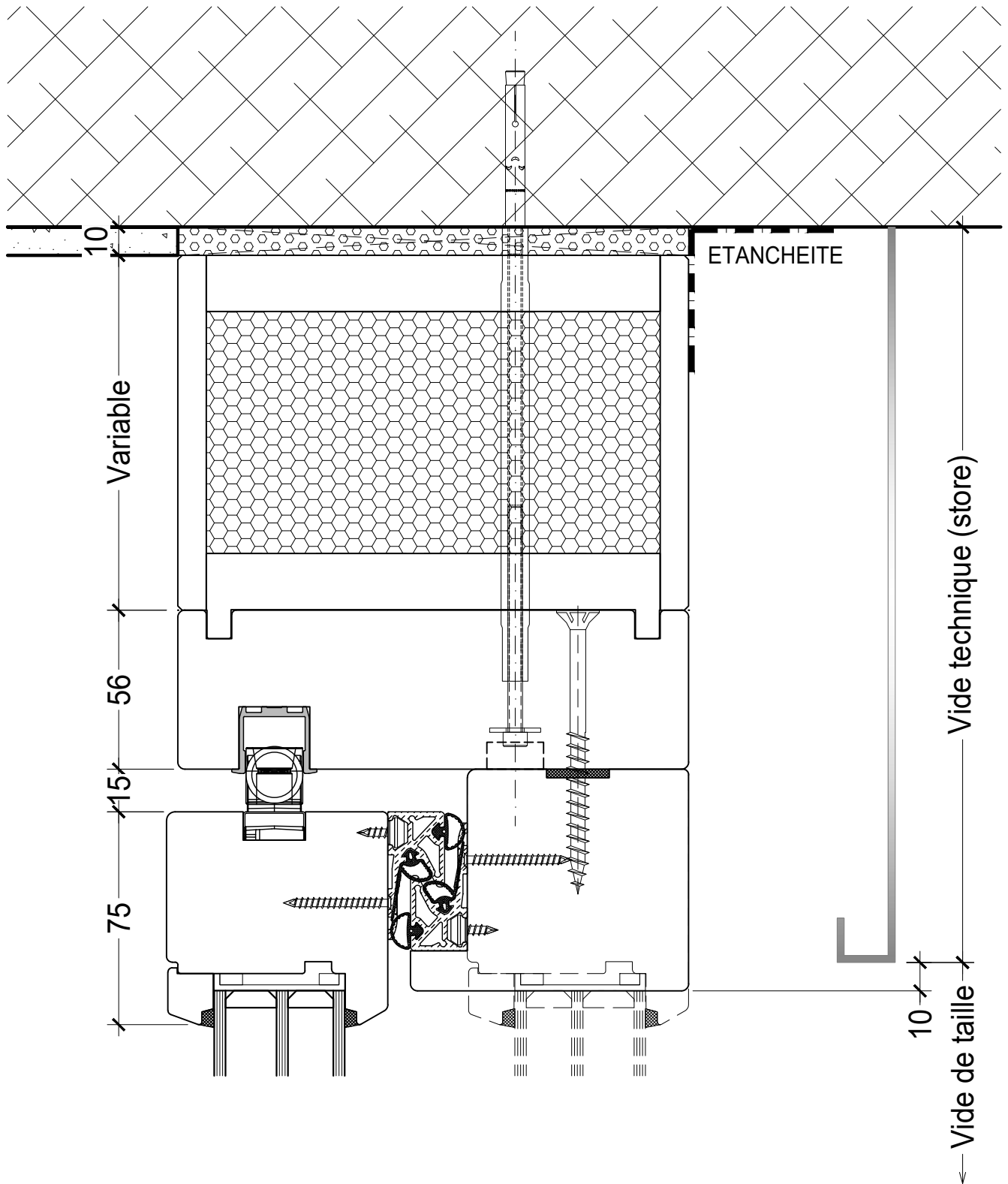
Concept du système d'étanchéité à charge DT

 NORBA MENUISERIE www.norba.ch				N°	03	Date	04.03.2022
				Tech.	DAO_20	Mod.	
Produit Menuiserie coulissante à levage Bois HAS6000		Ech.	1/2 A4	Mod.			
		Ech.		Mod.			
CAD 2017	Objet	Détail bas_Ouvrant Pose sur seuil béton			POS.: 22.03.01.03		


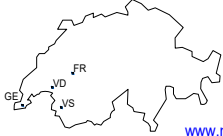


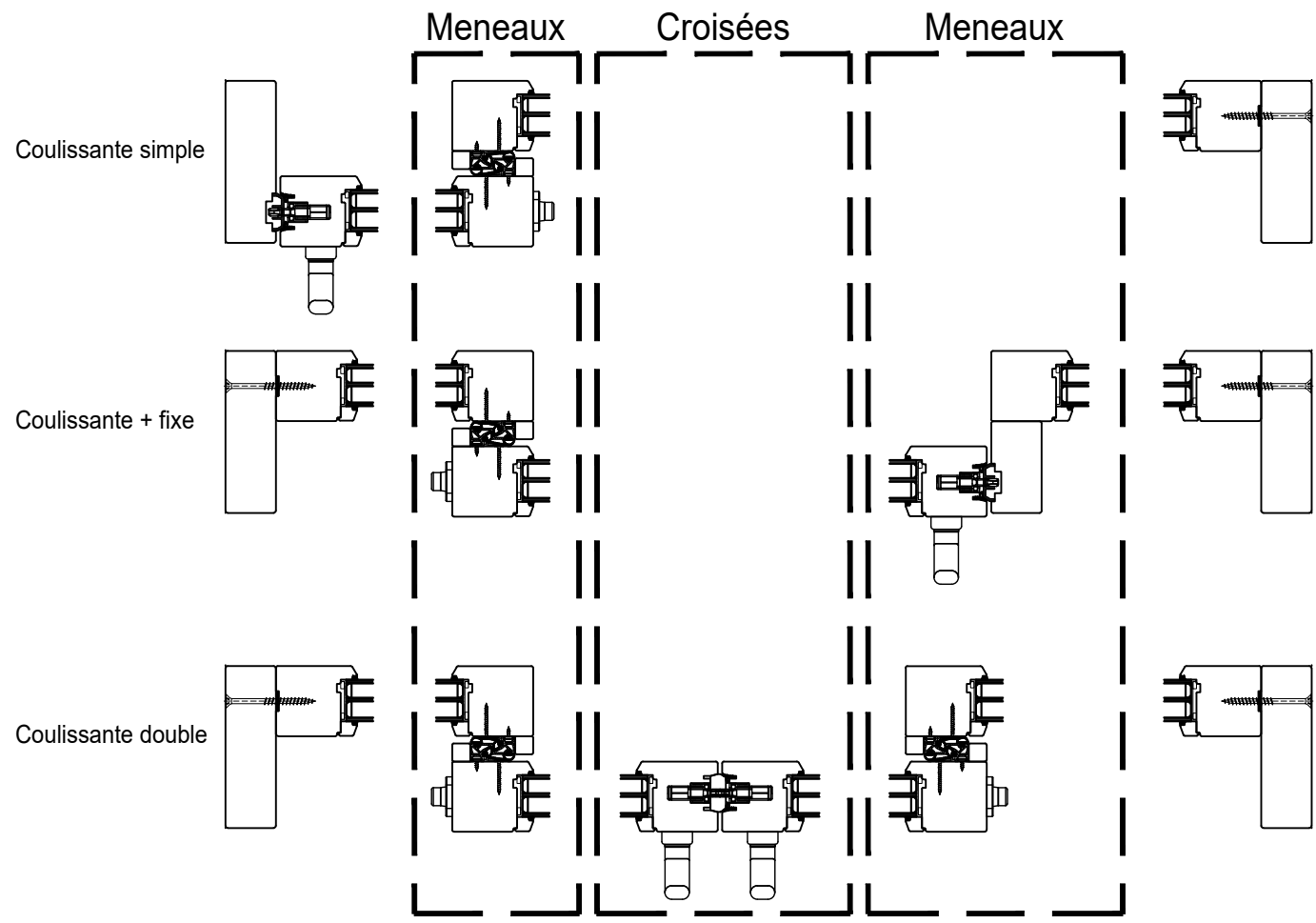
Concept du système d'étanchéité à charge DT



 NORBA MENUISERIE www.norba.ch	 www.norba.ch	N°	04	Date	04.03.2022	
		Tech.	DAO_20	Mod.		
		Ech.	1/2 A4	Mod.		
Produit	Menuiserie coulissante à levage Bois HAS6000		Ech.		Mod.	
CAD 2017	Objet	Détail bas_Ouvrant Pose sur dallettes		POS.: 22.03.01.04		

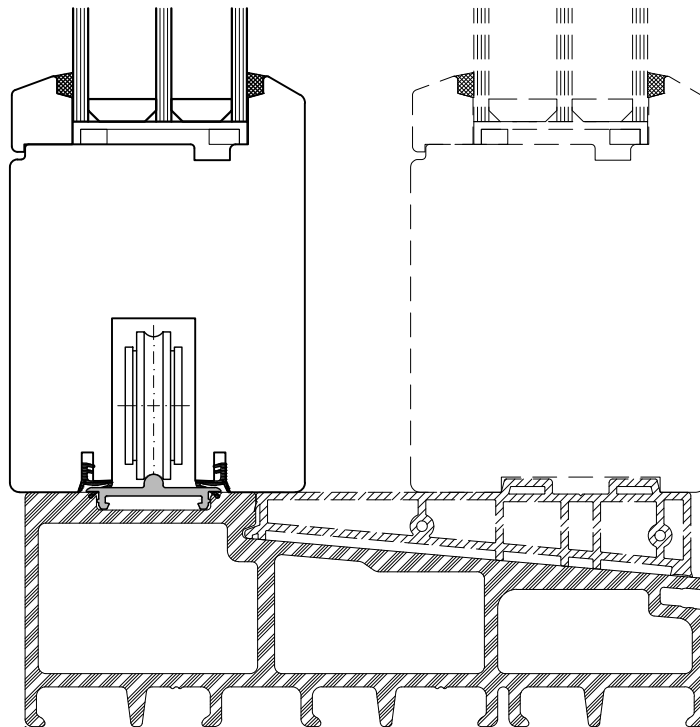
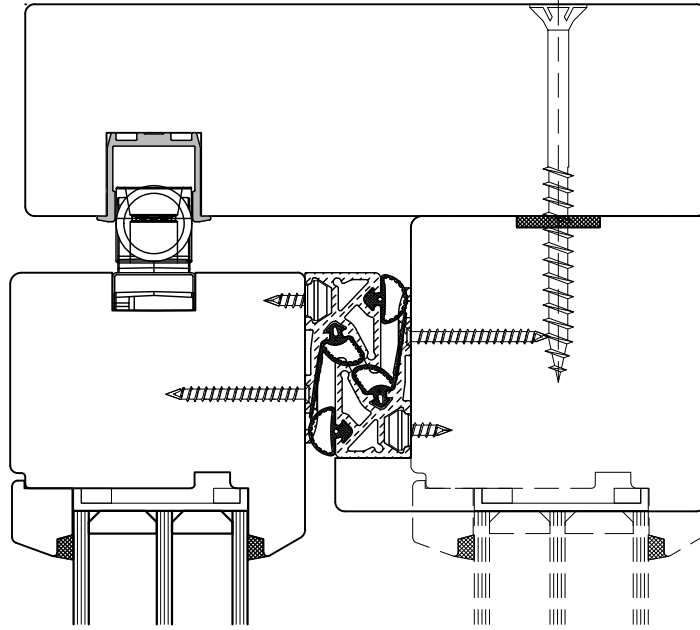



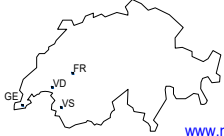
Concept du système d'étanchéité à charge DT

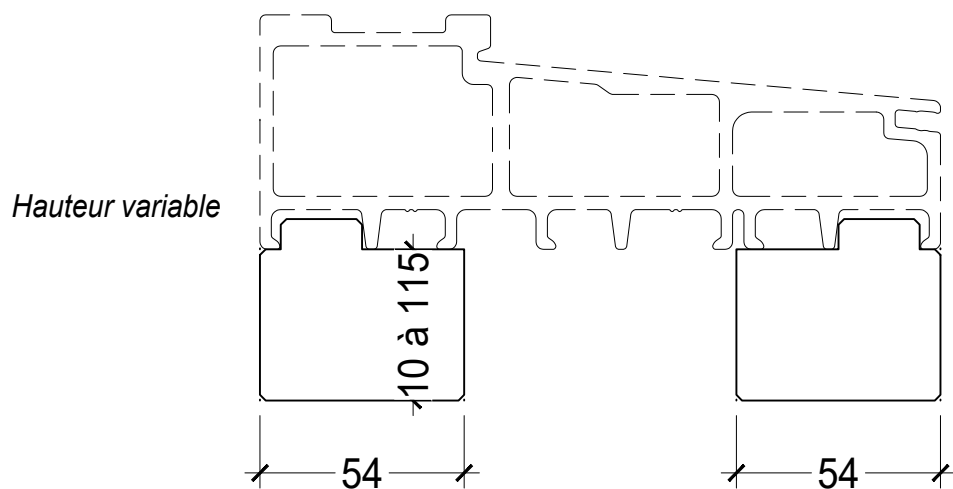
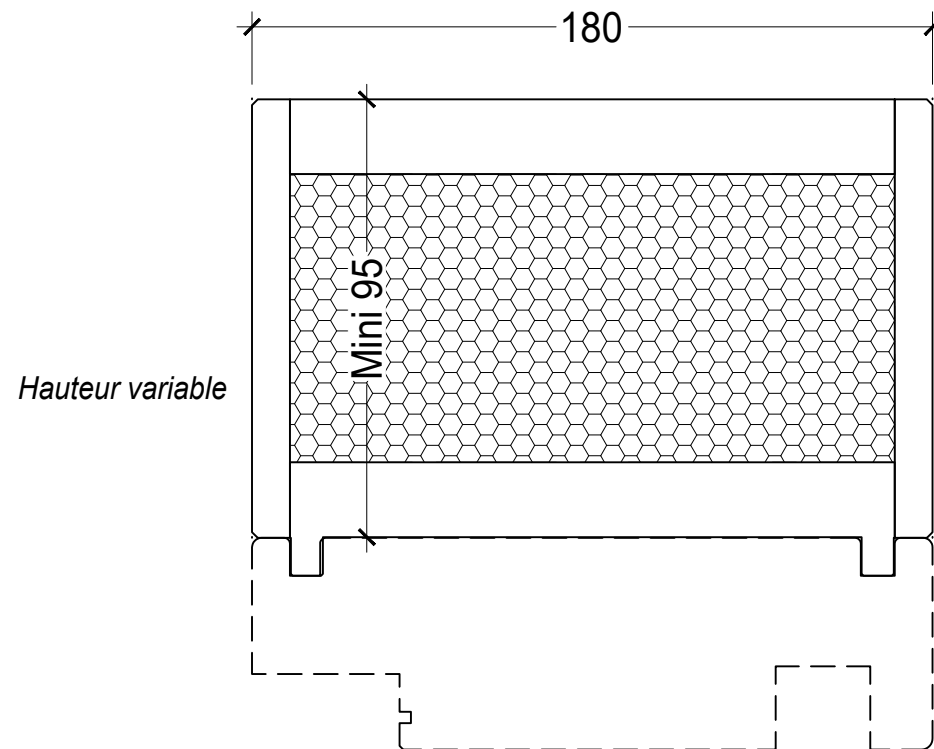
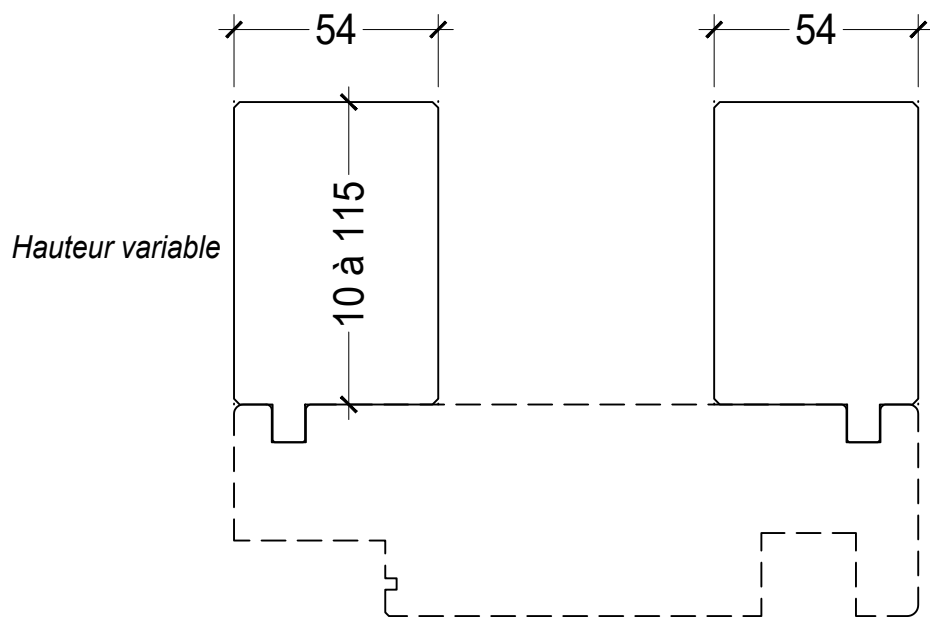
 NORBA MENUISERIE www.norba.ch		N°	05	Date	04.03.2022	
		Tech.	DAO_20	Mod.		
Produit Menuiserie coulissante à levage Bois HAS6000	CAD 2017	Objet Détail haut Coupe mixte ouvrant/fixe	Ech.	1/2 A4	Mod.	
			Ech.		Mod.	
			POS.: 22.03.01.05			


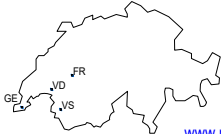


 NORBA MENUISERIE www.norba.ch		 www.norba.ch		N°	06	Date	04.03.2022
		Tech.	DAO_20	Mod.			
Produit Menuiserie coulissante à levage Bois HAS6000		Ech.	1/8 A4	Mod.			
		Ech.		Mod.			
CAD 2017	Objet	Coupes horizontales			POS.: 22.03.01.06		



 NORBA MENUISERIE www.norba.ch				N°	07	Date	04.03.2022
				Tech.	DAO_20	Mod.	
Produit Menuiserie coulissante à levage Bois HAS6000		Ech.	1/2 A4	Mod.			
		Ech.		Mod.			
CAD 2017	Objet	Coupe verticale			POS.: 22.03.01.07		



 NORBA MENUISERIE www.norba.ch				N°	08	Date	04.03.2022
		www.norba.ch		Tech.	DAO_20	Mod.	
Produit		Menuiserie coulissante à levage Bois HAS6000		Ech.	1/2 A4	Mod.	
CAD 2017	Objet	Profils élargisseurs		Ech.		Mod.	
				POS.: 22.03.01.08			